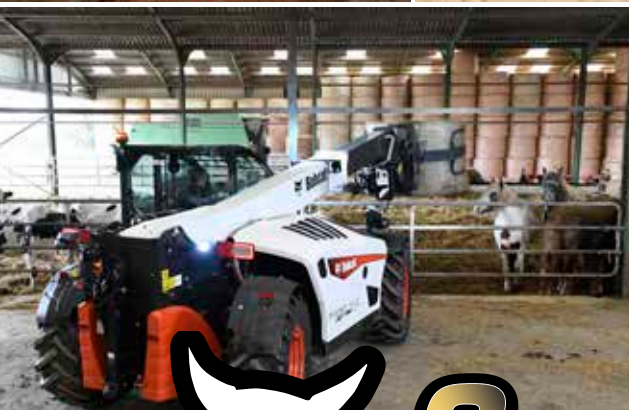
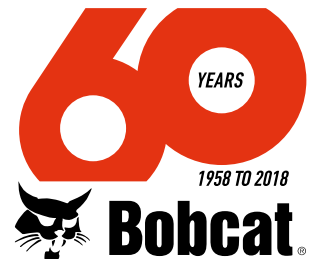




Bobcat®

PRODUCT RANGE TELEHANDLERS



**3 YEAR
WARRANTY**



One Tough Animal®

BOBCAT TELESCOPIC CENTER OF EXCELLENCE WITH MORE THAN 60 YEARS OF EXPERIENCE

All Bobcat telescopic loaders are designed and produced at our Center of Excellence in Pontchâteau, France. With more than 60 years of experience in creating material handling machines, this ISO 9001 certified factory applies the outstanding Bobcat Quality standards.



With a high level of technological integration from boom and frame welding to machine final assembly, our productivity and quality are ensured by modern production equipment such as welding robots, shot-blasting line, two-layer paint booth, and world-class components integration.

Each machine produced in this factory goes through a rigorous and extensive testing process before delivery, including: regulatory checks, performance compliance, quality inspections and all machine functionalities.



OUR STANDARD 3-YEAR MANUFACTURER WARRANTY BENEFITS YOU IN MANY WAYS*

With 60 years of experience in compact equipment design, Bobcat has a proven reputation for high quality standards and best-in-class technologies.

Every day, all of our energy is focused on delivering high-quality products through selection of leading and proven suppliers, integrated design, reliability/endurance testing, and a manufacturing process in which 100% of our production units are individually checked and quality approved.



The level of excellence achieved on Bobcat Telescopic Handlers leads Bobcat company to offer a 3-year standard warranty (or 3000 hours, whichever occurs first).

Efficient and Reliable, a Bobcat Telescopic Handler is built to last and to do the job every day as a real partner.



TL26.60

TL30.60

TL30.70

TL34.65HF

TL35.70

TL38.70HF

MAIN FEATURES

Stabilisers		-	-	-	-	-	-
Frame leveling		-	-	-	-	-	-
Boom Positioning System - BPS		-	-	-	-	-	-

PERFORMANCE

Maximum lift capacity	kg	2600	3000	3000	3400	3500	3800
Maximum lift height with standard tyres (on stabilisers when equipped)	mm	5800	5800	6670	6331	6889	6889
Maximum forward reach with standard tyres	mm	3100	3100	4020	3365	4002	4002
Crowding force	daN	4600	4600	4600	6200	6200	6200

WEIGHTS

Weight (unladen)	kg	4900	5320	5620	6360	7135	7245
------------------	----	------	------	------	------	------	------

ENGINE

BOBCAT D34 - 75 HP - Stage IIIB/Tier 4 Final		■	■	■	-	-	-
BOBCAT D34 - 100 HP - Stage IV/Tier 4 Final		■	■	■	-	■	-
BOBCAT D34 - 130 HP - Stage IV/Tier 4 Final		-	-	-	■	-	■
PERKINS 1104D-44TA - 100 HP - Stage IIIA/Tier 3		■	■	■	-	■	-
PERKINS 1104D-E44TA - 130 HP - Stage IIIA/Tier 3		-	-	-	-	-	■

DIMENSIONS

Standard tyres		405/70-20	405/70-20	405/70-20	405/70-20	405/70-20	405/70-20
Overall width	mm	2100	2100	2100	2300	2300	2300
Overall length to forks face	mm	4507	4507	5056	4669	4869	4869
Overall height	mm	Low Cab: 2100 (20") / 2184 (24") High Cab: 2250 (20") / 2334 (24")	Low Cab: 2100 (20") / 2184 (24") High Cab: 2250 (20") / 2334 (24")	Low Cab: 2100 (20") / 2184 (24") High Cab: 2250 (20") / 2334 (24")	2290 (20") / 2374 (24")	2290 (20") / 2374 (24")	2290 (20") / 2374 (24")
Ground clearance	mm	264 (20") / 348 (24")	264 (20") / 348 (24")	264 (20") / 348 (24")	346 (20") / 430 (24")	346 (20") / 430 (24")	346 (20") / 430 (24")
Wheelbase	mm	2820	2820	2820	2870	2870	2870
External turning radius (at tyres)	mm	3717 (20") / 3875 (24")	3717 (20") / 3875 (24")	3717 (20") / 3875 (24")	3714	3714	3714
Internal turning radius (at cab)	mm	1329 (20") / 1503 (24")	1329 (20") / 1503 (24")	1329 (20") / 1503 (24")	1092	1092	1092
BPS side-shift at max height	mm	-	-	-	-	-	-

DRIVE SYSTEM

Transmission		Hydrostatic with electronic regulation / 4 wheel drive					
Main drive		Hydrostatic motor			Hydrostatic motor + 2 speed gearbox		
Number of speeds		2	2	2	4	4	4
Max speed Low range	km/h	10	10	10	10	10	10
Max speed High range (option)	km/h	30 (40)	30 (40)	30 (40)	30 (40)	30 (40)	30 (40)

STEERING SYSTEM

Steering modes		3 steering modes with semi-automatic wheels realignment: 2 wheel steering / 4 wheel steering / crab-steer					
----------------	--	---	--	--	--	--	--

HYDRAULIC SYSTEM

Pump type		Gear pump with LS valve			Load sensing pump	Gear pump with LS valve	Load sensing pump
Distributor		Electro-proportional with flow sharing					
Pump capacity	l/min	100	100	100	190	100	190
Working pressure	bar	250	250	250	255	250	255

BRAKING SYSTEM

Service brake		Oil-immersed discs					
Parking and emergency brake		Passive brake with automatic actuation					

- Standard
- Non available



TL43.80HF	T35.105	T35.105L	T36.120SL	T35.130S	T35.130SLP	T35.140S	T41.140SLP	T40.180SLP
-	-	-	■	■	■	■	■	■
-	-	■	■	-	■	-	■	■
-	-	-	-	-	■	-	■	■

4300	3500	3500	3600	3500	3500	3500	4100	4000
7505	10290	10290	11852	12468	12468	13656	13656	17466
4022	6886	6886	8193	8764	8764	9449	9449	12800
7000	7800	7800	7800	12300	12300	12300	12300	12300

8040	7170	7170	8140	8655	8765	9130	10330	10750
------	------	------	------	------	------	------	-------	-------

-	■	■	■	■	■	■	■	■
-	■	■	■	■	■	■	■	■
■	-	-	-	-	-	-	-	-
-	■	■	■	■	■	■	■	■
■	-	-	-	-	-	-	-	-

400/80-24	405/70-20	405/70-20	405/70-20	405/70-20	405/70-20	400/80-24	400/80-24	400/80-24
2300	2264	2264	2264	2418	2418	2418	2418	2418
4975	5071	5071	5442	5876	5876	6108	6108	6220
2374 (24")	2389 (20") / 2474 (24")	2389 (20") / 2474 (24")	2389 (20") / 2474 (24")	2393 (20") / 2480 (24")	2393 (20") / 2480 (24")	2480	2480	2480
430 (24")	415 (20") / 500 (24")	415 (20") / 500 (24")	415 (20") / 500 (24")	422 (20") / 509 (24")	422 (20") / 509 (24")	509	509	509
2870	2850	2850	2850	2850	2850	2850	2850	2850
3714	3765	3765	3765	4150	4150	4150	4150	4150
1092	1245	1245	1245	1519	1519	1519	1519	1519
-	-	-	-	-	+/- 450	-	+/- 525	+/- 675

Hydrostatic with electronic regulation / 4 wheel drive								
Hydrostatic motor								
4	2	2	2	2	2	2	2	2
10	8.5	8.5	8.5	8.5	8.5	8.5	8.5	8.5
30 (40)	30	30	30	30	30	30	30	30

3 steering modes with semi-automatic wheels realignment: 2 wheel steering / 4 wheel steering / crab-steer

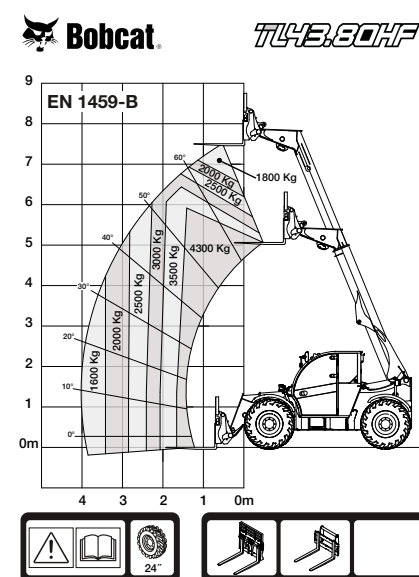
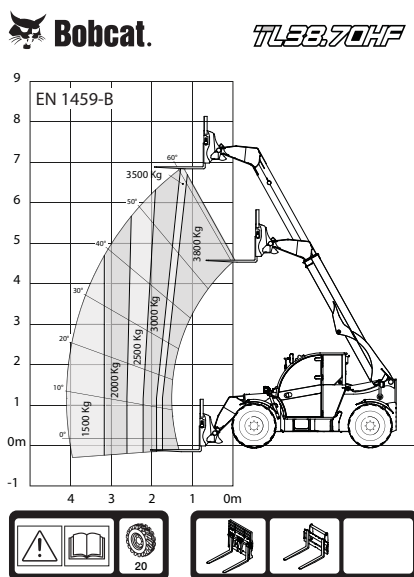
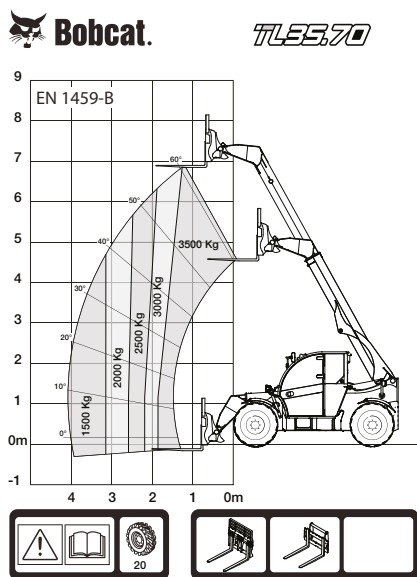
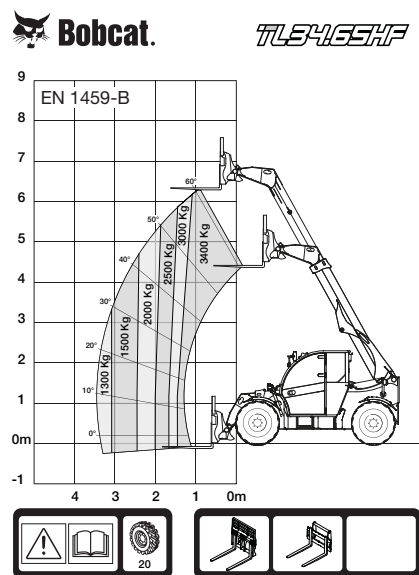
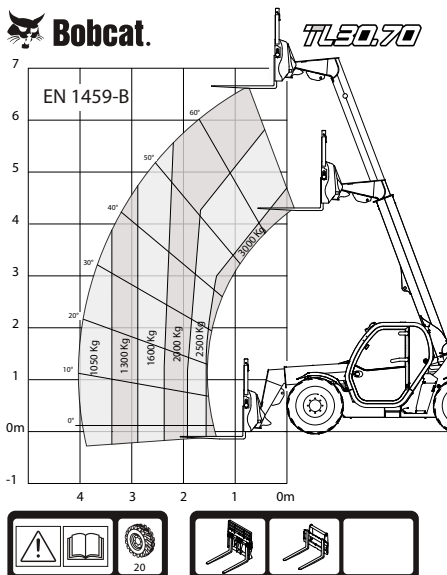
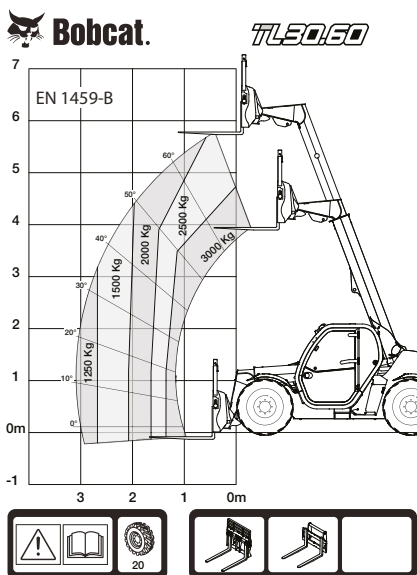
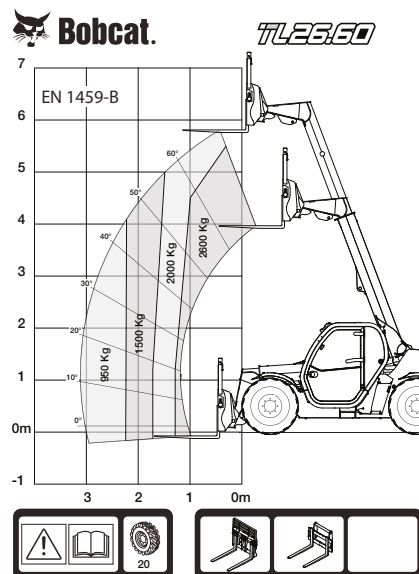
Load sensing pump	Gear pump with LS valve							
	Electro-proportional							
190	100	100	100	100	100	100	100	100
255	255	255	255	255	255	255	255	255

Oil-immersed discs
Passive brake with automatic actuation

LOAD CHARTS – TELESCOPIC LOADERS

ROUGH TERRAIN LOAD CHARTS

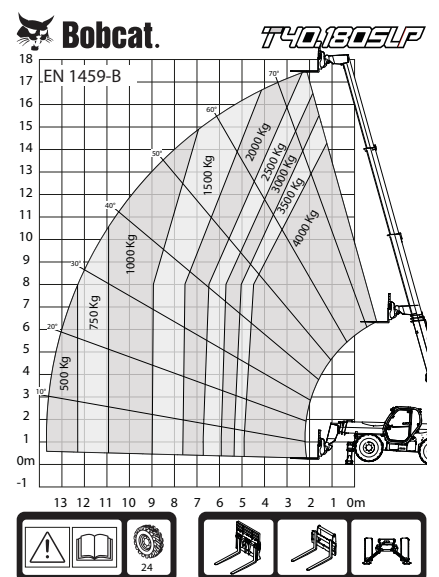
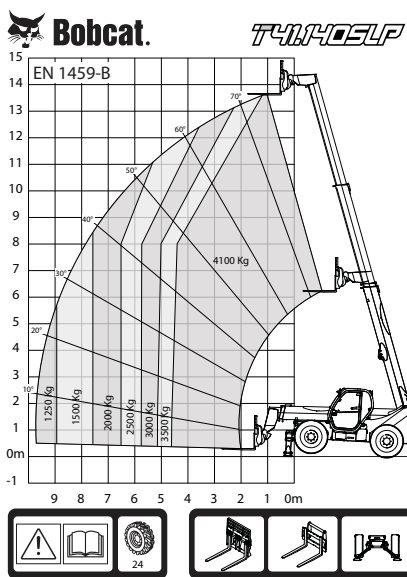
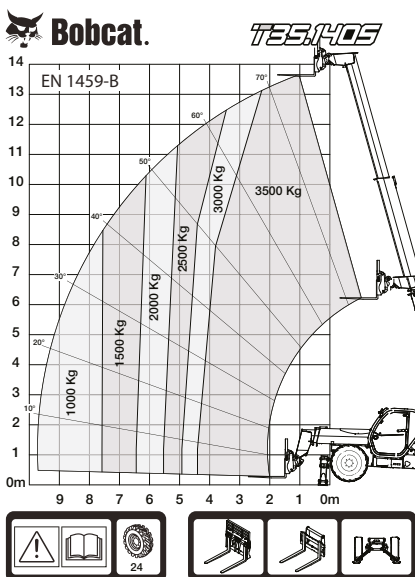
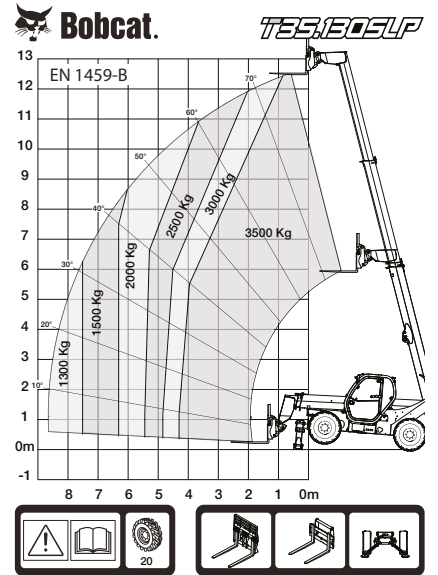
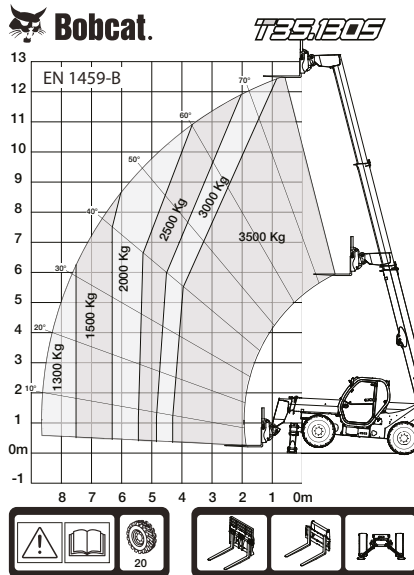
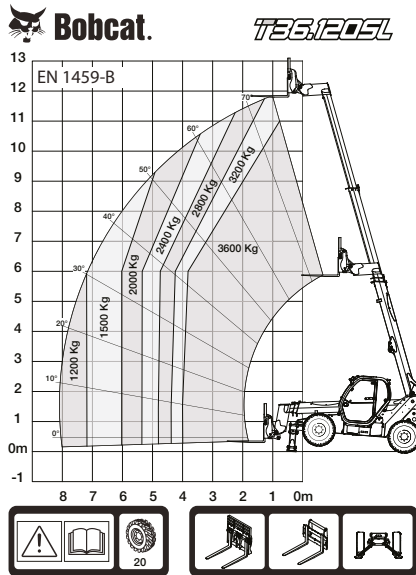
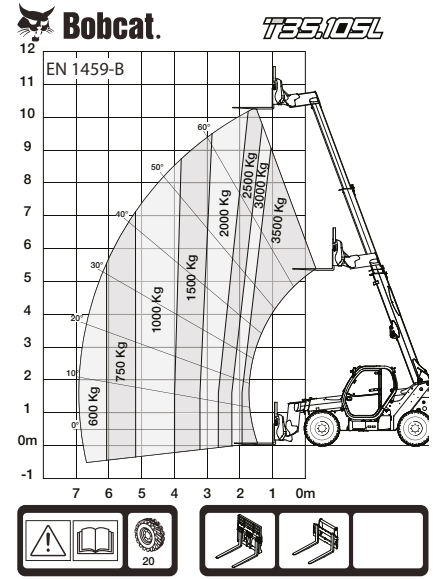
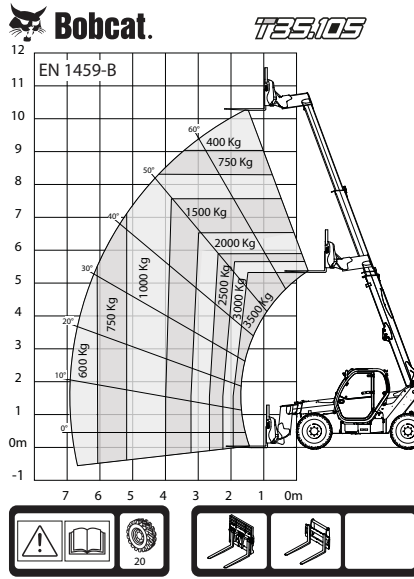
(COMPLIANT
WITH EN1459-B)



LOAD CHARTS – TELESCOPIC HANDLERS

ROUGH TERRAIN LOAD CHARTS

(COMPLIANT
WITH EN1459-B)



ENGINE SPECIFICATIONS

ENGINES		HIGHLY REGULATED COUNTRIES			LESSER REGULATED COUNTRIES	
Engine type		BOBCAT D34 75 HP	BOBCAT D34 100 HP	BOBCAT D34 130 HP	PERKINS 1104D-44TA 100 HP	PERKINS 1104D-E44TA 130 HP
Emissions		Stage IIIB / Tier 4 Final	Stage IV / Tier 4 Final	Stage IV / Tier 4 Final	Stage IIIA / Tier 3	Stage IIIA / Tier 3
Rated power (ISO 14396)	kW (HP)	55.2 (75) @ 2400 rpm	74.5 (100) @ 2400 rpm	97 (130) @ 2400 rpm	74.5 (100) @ 2200 rpm	96.5 (130) @ 2200 rpm
Max. torque	Nm	325 @ 1400 rpm	430 @ 1400 rpm	500 @ 1400 rpm	410 @ 1400 rpm	516 @ 1400 rpm
Fuel / Cooling		Diesel / Liquid			Diesel / Liquid	
Number of cylinders		4			4	
Displacement	l	3.4			4.4	
Fuel injection		Electronically controlled + High Pressure Common Rail			Mechanically controlled	Electronically controlled + High Pressure Common Rail
After-treatment system - Without Diesel Particulate Filter (DPF)	DOC (Diesel Oxidation Catalyst)	■	■	■	-	-
	EGR (Exhaust Gas Recirculation)	■	■	■	-	-
	SCR & AdBlue® (Selective Catalytic reduction) with AdBlue® injection	-	■	■	-	-



Certain specification(s) are based on engineering calculations and are not actual measurements. Specification(s) are provided for comparison purposes only and are subject to change without notice. Specification(s) for your individual Bobcat equipment will vary based on normal variations in design, manufacturing, operating conditions, and other factors. Pictures of Bobcat units may show other than standard equipment.



Bobcat is a Doosan Company.
Doosan is a global leader in construction equipment, power & water solutions, engines, and engineering proudly serving customers and communities for more than a century. Bobcat and the Bobcat logo are registered trademarks of Bobcat Company in the United States and various other countries.
©2018 Bobcat Company. All Rights Reserved.



Bobcat®

www.bobcat.com

